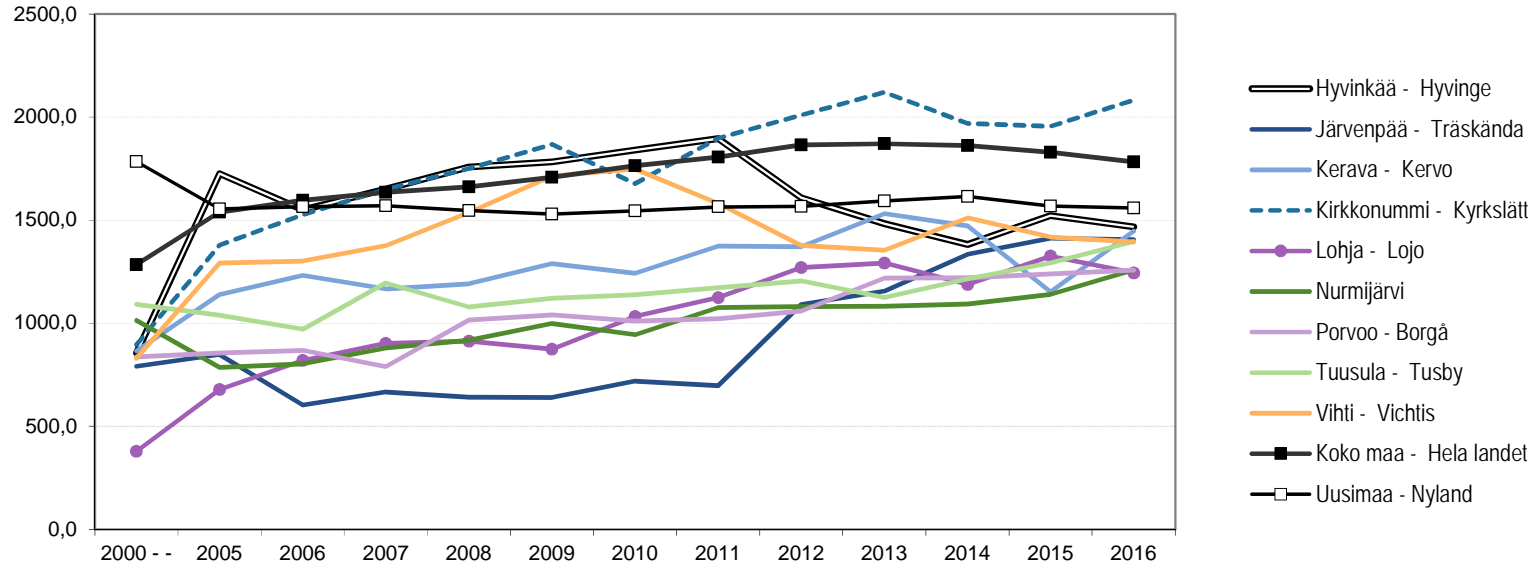


Vaikeavammaisten kuljetuspalvelujen saajia/100 000 asukasta
Klienter med färdtjänst för gravt handikappade/100 000 invånare



	Hyvinkää - Hyvinge	Järvenpää - Träskända	Kerava - Kervo	Kirkkonummi - Kyrkslätt	Lohja - Lojo	Nurmijärvi	Porvoo - Borgå	Tuusula - Tusby	Vihti - Vichtis	Koko maa - Hela landet	Uusimaa - Nyland
2000 - -	856,0	791,0	866,0	896,0	379,0	1015,0	838,0	1092,0	830,0	1285,0	1785,0
2005	1726,0	848,0	1138,0	1379,0	679,0	786,0	856,0	1040,0	1292,0	1540,0	1555,0
2006	1550,0	603,0	1232,0	1527,0	820,0	803,0	869,0	971,0	1302,0	1597,0	1566,0
2007	1651,0	666,0	1166,0	1650,0	903,0	880,0	790,0	1196,0	1376,0	1636,0	1571,0
2008	1758,0	642,0	1192,0	1751,0	914,0	918,0	1016,0	1080,0	1538,0	1662,0	1547,0
2009	1783,0	641,0	1289,0	1868,0	875,0	999,0	1041,0	1121,0	1715,0	1708,0	1530,0
2010	1840,0	719,0	1243,0	1678,0	1033,0	944,0	1011,0	1139,0	1748,0	1764,0	1546,0
2011	1896,0	698,0	1375,0	1898,0	1125,0	1076,0	1022,0	1173,0	1581,0	1806,0	1565,0
2012	1610,0	1090,0	1371,0	2010,0	1271,0	1081,0	1059,0	1205,0	1378,0	1865,0	1567,0
2013	1483,0	1156,0	1532,0	2121,0	1293,0	1083,0	1220,0	1125,0	1355,0	1871,0	1594,0
2014	1382,0	1335,0	1472,0	1970,0	1189,0	1094,0	1221,0	1215,0	1511,0	1862,0	1616,0
2015	1522,0	1413,0	1153,0	1956,0	1326,0	1141,0	1240,0	1292,0	1418,0	1830,0	1569,0
2016	1468,0	1406,0	1447,0	2083,0	1245,0	1259,0	1258,0	1397,0	1395,0	1783,0	1559,0